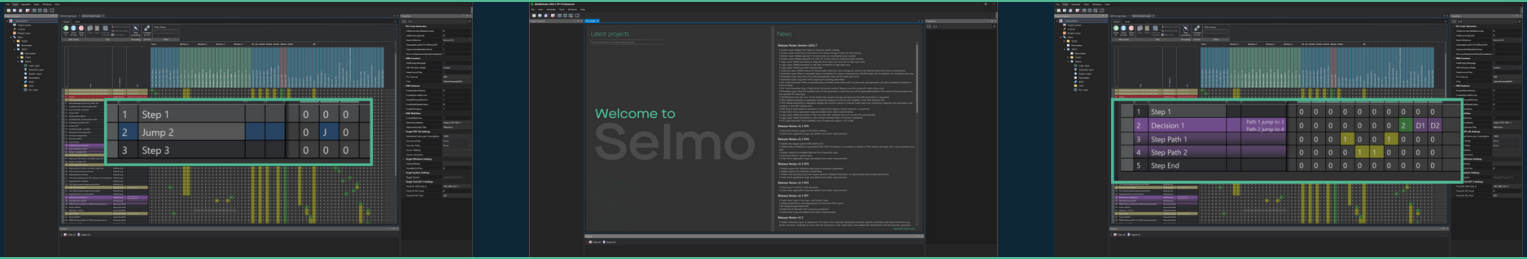


## Features Version 2022.7 SP1 + new Design

# Selmo studio

One tool.  
One standard.  
Your process as a digital model.



### Key-Features in the new Version 2022.7 SP1

#### • System Layer

Added text filter for zones to toggle visibility.

#### • System Layer

Added 'J' operand to set a zone as a conditional jump variable.

#### • System Layer

Added operand "D1" and "D2" to specify a zone as a decision path variable.

#### • Logic Layer

Added the ability to drag and drop steps from the toolbar to the logic layer area.

#### • Logic Layer

Added the ability to add text comments to the logic layer area.

#### • Assembly Layer

Added feature to rename all names of all attached items like zones or parameters after changing the assembly name.



- Assembly Layer

If a connection to a zone is removed in the assembly layer, Selmo studio now also asks to delete the connected zone.

- Parameters

The unit is now set automatically when the PLC data type 'Time' is set.

- Parameters

Now the variable name of the parameter is read-only and is generated based on the name of the parameter and the selected PLC data type.

- Code-Generator

If an assembly name begins with a number, the code generator adds an underscore in front of the name.

- Selmo studio

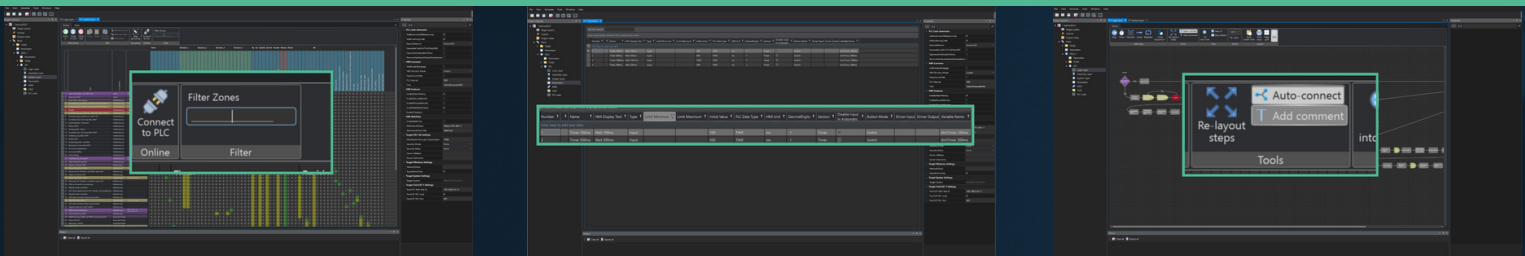
Now the user is asked about pending project changes and requested the HMI generation.

- HMI

Added the ability to separately lock the function panels manual mode, step time monitoring, diagnostics and parameters with variables in the HMI interface GVL.

- HMI

Added the ability to separately disable the flow controls with variables in the HMI interface GVL.



FOR  
SOFTWARE  
THAT NEVER  
LETS YOU  
DOWN

